

Customer :

customer

Customer part :

customer part

Comment :

Comment

S1=3.28

S2=30.09

Tmax=431

Tp S2=470.0

PI=0.1

HI=529

Sample =754.44

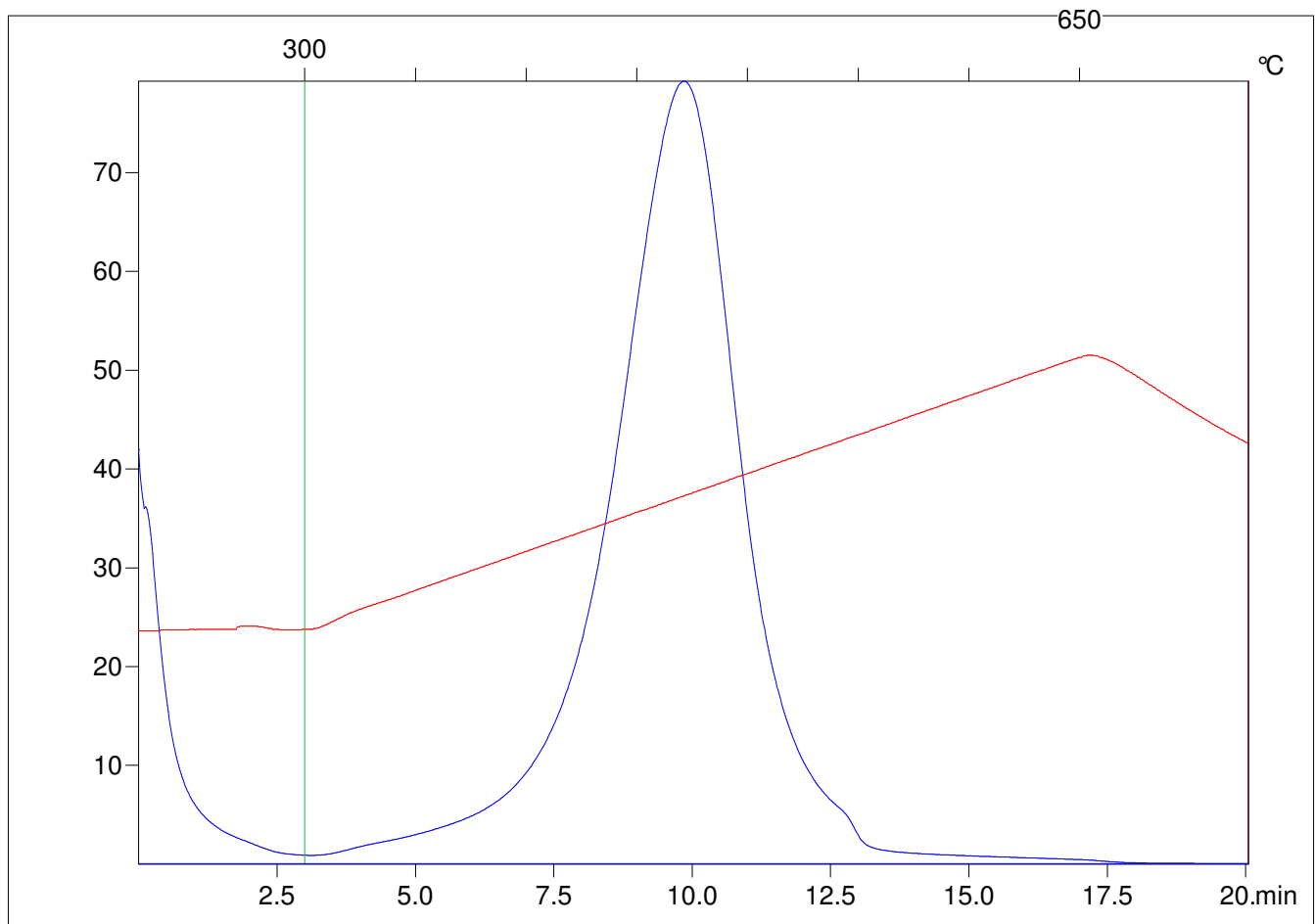
Method =Bulk Rock

Cycle=Basic

KFID(10*9)=1550

Qty =70.5

TOC=5.69



C:\VINC\PK130315\PK005.R00 : FID pyrolysis graphic

State

Pyro Status

Oxi Status